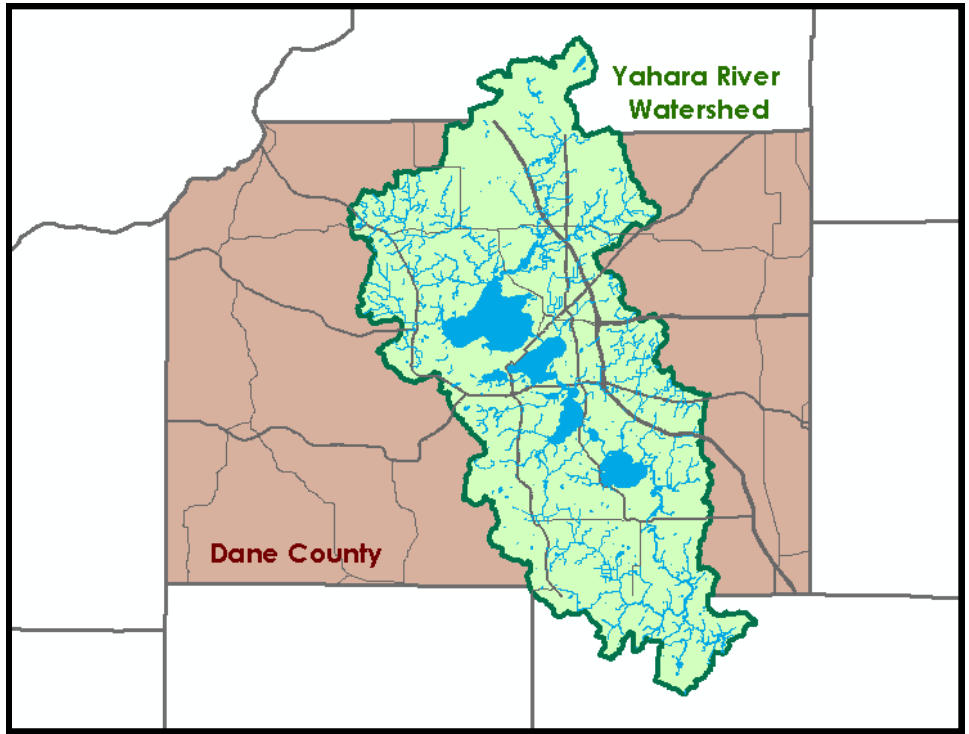


Yahara CLEAN



Yahara CLEAN Conservation Practice Implementation

Agricultural conservation practices are a highly effective way to help keep soil and nutrients on the lands and out of nearby streams and lakes. The Yahara Clean cost-share program provides cost-share funds to support the implementation of conservation practices and systems that reduce both nutrient and sediment runoff to nearby streams and have the greatest potential for water quality benefits. Producers/landowners with agricultural land located in the Yahara River watershed are eligible as funds are available.

Examples of Eligible Practices:

- Grassed waterways
- Diversions
- Agricultural sediment basins
- Roof runoff management
- Roofs and covers over feedlots
- Manure storages

Roof Runoff Magt.



Grassed Waterway



For more information, please
contact:

Land Conservation Division
(608) 224-3730
landcon@countyofdane.com

Program Requirements:

- ✦ The cost-share recipient agrees to maintain practices for the length of the operation and maintenance period.
- ✦ If payments exceed \$25,000, the maintenance agreement between Dane County and the producer/landowner will be recorded on the deed for 10 years.
- ✦ Manure storage and management must comply with Dane County Code of Ordinances Ch. 14. Manure storage systems must be designed with a minimum of six month storage capacity with an additional two months capacity to account for variable weather conditions.
- ✦ Producers/landowners receiving cost-share funds for manure storage will not land apply liquid manure between December 1st and March 31st of each calendar year without prior written approval from the Director of the Dane County Land and Water Resources Department.

Funding and Practices:

- ✦ Dane County maintains average cost information for common conservation practices and uses this information to estimate project costs and cost-share rates.
- ✦ Conservation practices will be cost-shared up to 70% of actual cost. If the producer/landowner receives cost-share funds from other programs, CLEAN funds may be used to increase cost-share rate up to 90% of actual costs.
- ✦ Wetland restoration and structures designed to trap water and sediment, such as agricultural sediment basin, water and sediment basin, and grade stabilization structures, may receive up to 90% of the total cost to implement the practice. If a producer/landowner receives cost-share funds from other programs, CLEAN funds may be used to increase cost-share to 100% of actual costs.
- ✦ Wetland restorations and structures designed to trap water and sediment may receive a one-time payment of \$2,500

Manure Storage



Wetland Restoration



Application Process:



Signup period is on-going and will continue until all funds are allocated.



Land Conservation Committee approves individual cost-share agreements and payments.